

# **RD 2034 MSR & SOI Study**

Presentation to  
Solano LAFCO  
December 10, 2018

# Purpose of Study



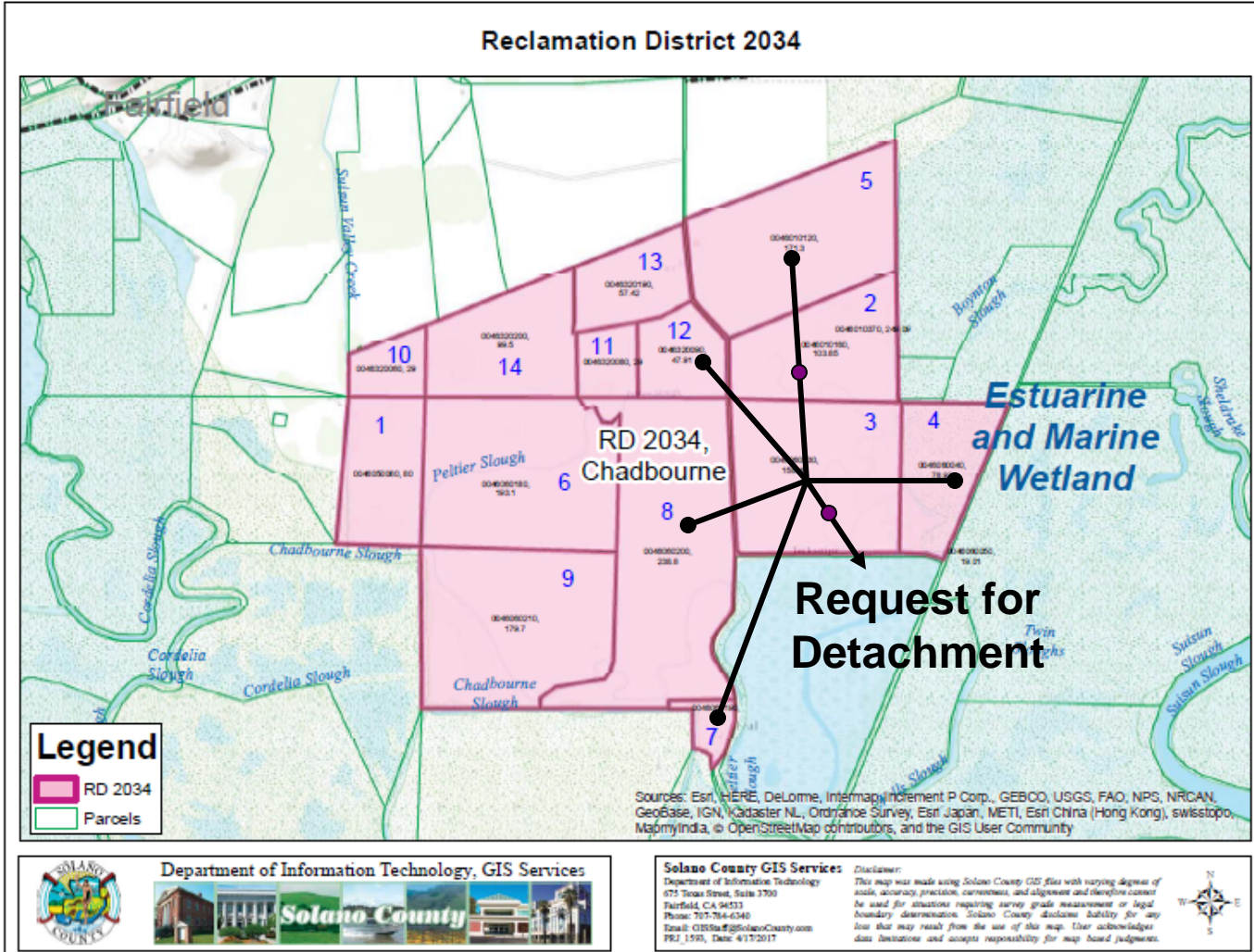
- Request for Detachment
- SOI Update
- MSR Requirement
- Update of 2009 study
- Consideration for Dissolution of District

# Consultant Team



- Milani & Associates
  - civil engineering firm with reclamation district and levee experience
- MMS Design
  - civil engineer, LAFCO expert
- Craft Consulting Group
  - planning, economics, finance

# RD 2034 Boundaries/Parcels



# MSR Determinations



- (1) Population and growth of the district;
- (2) Location and characteristics of any disadvantaged unincorporated communities;
- (3) Present and planned capacity of public facilities;
- (4) Financial ability of agency to provide services;
- (5) Status of, and opportunities for, shared facilities;
- (6) Accountability for community service needs;
- (7) Other matters related to efficient service delivery.

# District Overview



- 1912 Agreement
  - Property owners responsible for maintenance
- 1919 District Formation
- 1950 Easement Grants

# Key Findings/Determinations



- Detachment Request (56% of District)
- Adequacy/Capacity of Service (4.3.1 & 4.3.2)
  - Property owners responsible for levees on their property
- Financial Ability (4.4.1 thru 4.4.4)
  - Assets – easements
  - No assessments
  - No financials filed with SCO
  - Shared cost for operation & maintenance of pump
- Governance (4.6.1 thru 4.6.5)

# Recommended Options



- 1: No Change – Deny Detachment Request
- 2: No Boundary Change - Deny Detachment Request with Conditions for the District to Improve Governance.
- 3: Approve Detachment of Property and Improve Governance Structure
- 4: Dissolution of the District



